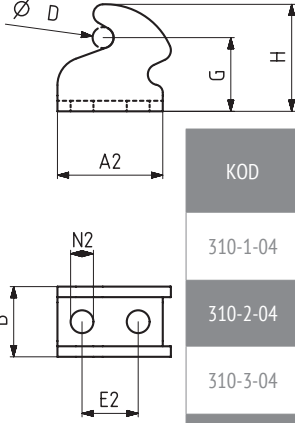


311

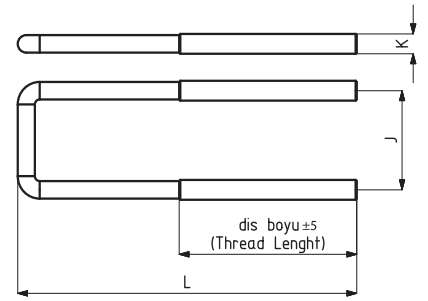


**Gerdirme Parçası**  
Stretcher Parts

| KOD      | MODEL NO                         | PASLANMAZ (STAINLESS) | SİYAH (BLACK) | AĞIRLIK (WEIGHT) (gr ±%2) | A2   | B    | D     | G    | H    | E2   | N2        |
|----------|----------------------------------|-----------------------|---------------|---------------------------|------|------|-------|------|------|------|-----------|
| 310-1-04 | 311-312-321-331-332-351-1        | S310-1-04             | B310-1-04     | 12                        | 24,5 | 15,5 | Ø 3,5 | 12,5 | 19   | 10   | Ø 5       |
| 310-2-04 | 311-312-331-332-351-2            | S310-2-04             | B310-2-04     | 19                        | 28,5 | 15,5 | Ø 3,5 | 16,5 | 23   | 12   | 5,5 x 7,5 |
| 310-3-04 | 311-312-331-332-351-421-3        | S310-3-04             | B310-3-04     | 36                        | 30   | 20   | Ø 5,5 | 21   | 30,5 | 16   | Ø 6,5     |
| 310-4-04 | 311-312-331-332-351-4-5<br>371-4 | S310-4-04             | B310-4-04     | 86                        | 45   | 28   | Ø 7   | 27   | 39   | 19,5 | 8,5 x 10  |

311

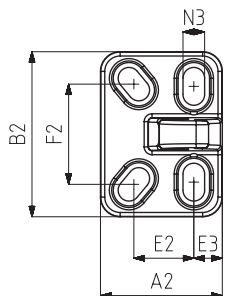
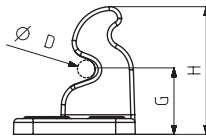
**U Kanca**  
U Hook



new

| KOD     | MODEL NO   | "PASLANMAZ (STAINLESS)" | SİYAH (BLACK)" | AĞIRLIK (WEIGHT) (gr ± %2)" | J  | K   | L   | "DIŞ BOYU (Thread length)" |
|---------|--|-------------------------|----------------|-----------------------------|----|-----|-----|----------------------------|
| 150-63  | "311-312-321-331-332-351-1<br>311-312-331-332-351-2"   | S 150-63                | B 150-63       | 14                          | 23 | M4  | 90  | 45                         |
| 150-758 | "311-312-321-331-332-351-1-1<br>311-312-331-332-351-2" | S150-758                | B 150-758      | 10                          | 23 | M4  | 55  | 28                         |
| 150-591 | "311-312-321-331-332-351-1-1<br>311-312-331-332-351-2" | S 150-591               | B150-591       | 12                          | 23 | M4  | 75  | 45                         |
| 150-155 | "311-312-321-331-332-351-1<br>311-312-331-332-351-2"   | S 150-155               | B 150-155      | 22                          | 23 | M4  | 140 | 45                         |
| 150-08  | 311-312-331-332-351-3                                  | S 150-08                | B 150-08       | 39                          | 30 | M6  | 105 | 75                         |
| 150-156 | 311-312-331-332-351-3                                  | S 150-156               | B 150-156      | 56                          | 30 | M6  | 155 | 75                         |
| 150-34  | 311-312-331-332-351-4-341-3                            | -                       | B 150-34       | 101                         | 43 | M8  | 145 | 95                         |
| 150-198 | 311-312-331-332-351-4                                  | -                       | B 150-198      | 135                         | 43 | M8  | 195 | 65                         |
| 150-35  | 311-312-331-332-351-4                                  | -                       | B 150-35       | 187                         | 43 | M8  | 295 | 85                         |
| 150-539 | 311-312-331-332-351-4                                  | -                       | -              | 175                         | 43 | M8  | 250 | 80,5                       |
| 150-148 | 341-4  | -                       | -              | 222                         | 50 | M10 | 210 | 130                        |
| 150-512 | 341-4  | -                       | -              | 260                         | 50 | M10 | 260 | 130                        |
| 150-650 | 371-4  | -                       | B150-650       | 85                          | 43 | M8  | 120 | 65                         |
| 150-200 | 311-312-331-332-351-5                                  | -                       | B 150-200      | 257                         | 45 | M10 | 258 | 130                        |
| 150-141 | 311-312-331-332-351-5                                  | -                       | B 150-141      | 200                         | 45 | M10 | 180 | 110                        |
| 150-516 | 311-312-331-332-351-5                                  | -                       | B 150-516      | 240                         | 45 | M10 | 230 | 130                        |
| 150-285 | 341-5  | -                       | -              | 229                         | 54 | M12 | 146 | 65                         |

341



| KOD      | MODEL NO | AĞIRLIK (WEIGHT) (gr ±%2) | A2   | B2 | D    | G    | H    | E2   | F2 | N3         |
|----------|----------|---------------------------|------|----|------|------|------|------|----|------------|
| 340-3-03 | 341-3    | 210                       | 49,5 | 67 | Ø 8  | 27   | 52,5 | 24,5 | 41 | 8,5 x 14,5 |
| 340-4-03 | 341-4    | 400                       | 62   | 84 | Ø 10 | 33,5 | 65   | 30,5 | 51 | 11 x 19    |
| 340-5-03 | 341-5    | 510                       | 66   | 84 | Ø 12 | 33,5 | 65   | 31,5 | 51 | 11 x 19    |

**Gerdirme Parçası**  
Stretcher Parts