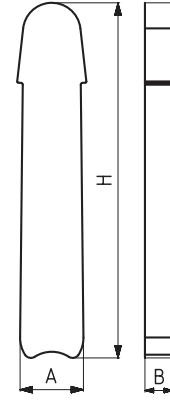




\*921 Bkz. Aksesuar Sayfası (sayfa 130)  
 \*921 Please See Accessories Page (page 130)

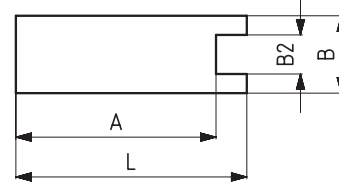
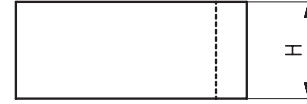


**METAL UZATMA KOLU**  
 METAL EXTENSION ARM

**METAL UZATMA KOLU / METAL EXTENSION ARM**

KOD	MODEL NO	POLİÜRETAN SAP (POLYURETHANE HANDLE)	AĞIRLIK (WEIGHT) (gr ±%2)	A	B	H
220-2-06	"221-221-L-221-C-221-C-L-222-222-L-222-C-222-C-L-224-224-K-224-L-224-K-L-225-232-2"	921 - 2	25	11	5	66
220-2-06-C1	"221-221-L-221-C-221-C-L-222-222-L-222-C-222-C-L-224-224-K-224-L-224-K-L-225-232-2"	921 - 2	75	13,5	5	167
220-4-06	"221-221-L-221-C-221-C-L-222-222-L-222-C-222-C-L-224-224-K-224-L-224-K-L-225-232-4 / 222-3"	921 - 4 - 8 mm	110	18	8	105
220-4-06 C1	"221-221-L-221-C-221-C-L-222-222-L-222-C-222-C-L-224-224-K-224-L-224-K-L-225-232-4"	921 - 4 - 8 mm	235	20,5	8	207
220-6-06	"221-221-L-221-C-221-C-L-222-222-L-222-C-222-C-L-224-224-K-224-L-224-K-L-225-232-6"	921 - 4 - 10 mm	150	18	10	114
220-6-06-C1	"221-221-L-221-C-221-C-L-222-222-L-222-C-222-C-L-224-224-K-224-L-224-K-L-225-232-6"	921 - 4 - 10 mm	307	20,5	10	215

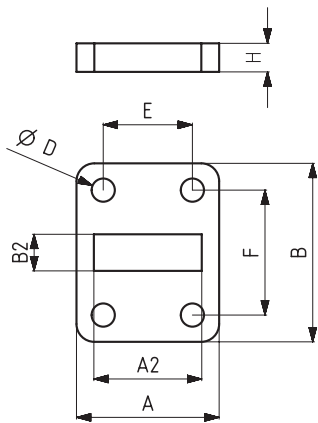
**ÇENE UZATMA LAMASI**  
 JAW EXTENSION BAR



**ÇENE UZATMA LAMASI / JAW EXTENSION BAR**

KOD	MODEL NO	AĞIRLIK (WEIGHT) (gr ±%2)	A	B	B2	L	H
220-2-07	222-232-2	50	32	12	6,5	40	15
220-4-07	222-232-4	215	52	20	10,1	60	25
220-6-07	222-232-6	430	68	25	12,1	80	30

\*951-G  
 Bkz. Aksesuar Sayfası (sayfa 131)  
 \*951-G  
 Please See Accessories Page (page 131)



**TABAN PLAKASI**  
 BASE PLATE



**TABAN PLAKASI / BASE PLATE**

KOD	MODEL NO	AĞIRLIK (WEIGHT) (gr ±%2)	A	A2	B	B2	D	E~	F~	H
232-2-08	232-2	105	40	15.5	50	6,5	Ø6.5	25	35	8
232-4-08	232-4	95	40	24.5	50	10.5	Ø6.5	25	35	8
232-6-08	232-6	145	50	28.5	60	12.5	Ø8.5	30	40	8