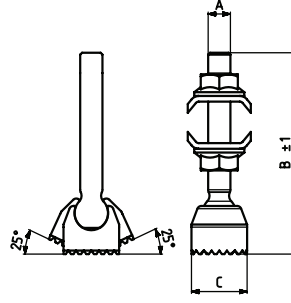


914

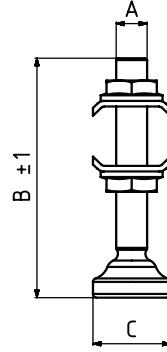
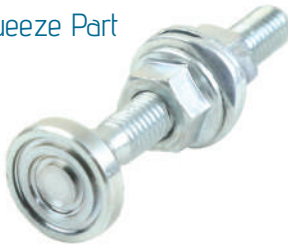
Metal Tırtır Mafsal Uç
Knurled Swivel Metal Squeeze Part
PATENT NO: 20100115



MODEL NO	AÇI (ANGLE)	AĞIRLIK (WEIGHT) (gr ±%2)	A	B	C
914 - 2	25°	33	M6	53,5	Ø15
914 - 3	25°	69	M8	63,5	Ø20
914 - 4	25°	148	M10	90	Ø26
914 - 5	25°	222	M12	103	Ø30

915

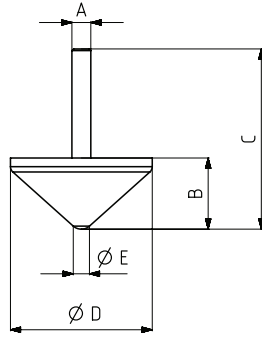
Metal Sabit Uç PATENT NO: 20100115
Fixed Metal Squeeze Part



MODEL NO	AĞIRLIK (WEIGHT)(gr ±%2)	A	B	C
915 - 1	8	M5	43	Ø14
915 - 2	15	M6	53,5	Ø16
915 - 3	53	M8	64,5	Ø20
915 - 4	105	M10	86	Ø25
915 - 5	182	M12	98	Ø30

150-623

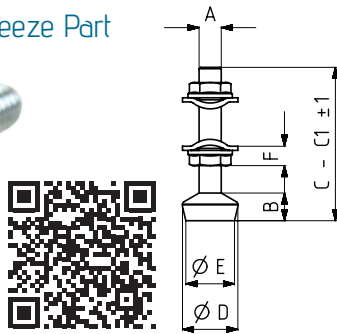
NBR Baskı Ucu
NBR Squeeze Part



KOD	MODEL NO	PASLANMAZ (STAINLESS)	AĞIRLIK (WEIGHT) (gr ±%2)	A CIVATA DIN 933 (SCREW DIN 933)	B	C	D	E
150 - 623	510-520-530-550-620-640-660-670-3	S150 - 623	155	M8 x 50	30	76	60	6,5

916

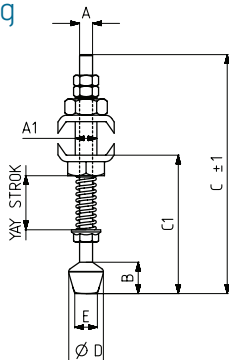
Silikon Uç
Silicon Squeeze Part



KOD	MODEL NO	PASLANMAZ (STAINLESS)	SİYAH (BLACK)	AĞIRLIK (WEIGHT) (gr ±%2)	A CIVATA DIN 933 (SCREW DIN 933)	B	C	C1	D	E	F
150 - 324	916 - 0	S 916 -	B 916 -	6	M4 x 25	5	29	-	10	9	6
150 - 526	916 - 0 - C1	S 916 -	B 916 -	10	M4 x 60	5		63,9	10	9	6
150 - 263	916 - 1	S 916 -	B 916 -	16	M 5 x 35	7	40	-	12	10	7
150 - 588	916 - 1 - C1	S 916 -	B 916 -	16	M 5 x 60	7		65	12	10	7
150 - 264	916 - 2	S 916 -	B 916 -	23	M 6 x 40	10	46	-	16	13	8
150 - 265	916 - 3	S 916 -	B 916 -	46	M 8 x 50	12	57	-	20	16	10
150 - 266	916 - 4	-	B 916 -	98	M10 x 70	16	79	-	26	20	13
150 - 328	916 - 5	-	B 916 -	152	M12 x 80	19	91	-	30	24	15

917

Çaylı Silikon Uç
Silicon Squeeze Part With Spring



KOD	MODEL NO	SİYAH (BLACK)	YAY STROK	AĞIRLIK (WEIGHT) (gr ±%2)	A CIVATA DIN 933 (SCREW DIN 933)	A1	B	C	C1	D	E
150 - 545	917 - 3	B 917 -	8	37	M 5 x 60	M8	10,5	68,5	35,5	12,5	9
150 - 246	917 - 4	B 917 -	14	82	M 6 x 120	M10	14,5	130,5	55 - 93,5	16	10,5
150 - 283	917 - 5	B 917 -	19	140	M 8 x 130	M12	18	143	69-88	20	14

