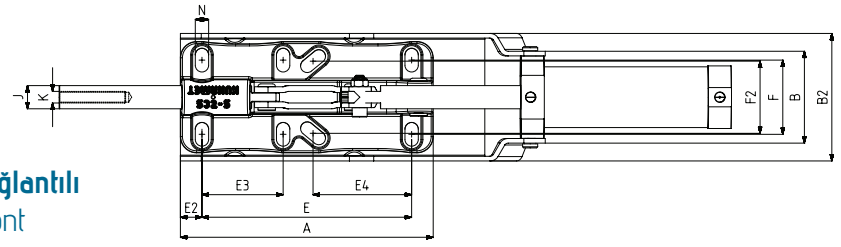
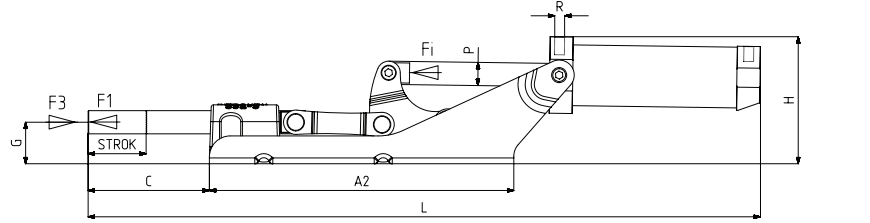




MODEL NO	F1 (N)	F3 (N)	Fi (N)	Vn (dm ³)	STROK	AĞIRLIK (WEIGHT) (gr ±%2)	BAR
672 - 5 (Ø 20)	7500	18450	1100	2	95	5260	6
F1 : BASKI KUVVETİ (EXERTING FORCE) , F3 : TUTMA KAPASİTESİ (HOLDING CAPACITY) , Fi : UYGULAMA KUVVETİ (APPLIED FORCE)							
Vn , 6 BAR BASINÇTA ÇİFT HAREKET İÇİN HAVA TÜKETİM MİKTARIDIR (Vn , AIR CONSUMPTION PER DOUBLE STROKE IN dm ³ AT 6 BAR)							



MODEL NO : 672-5

Ayak Tipi: Yatay Tabanlı, Döküm Gövdeli, Ön Bağlantılı
Body Mounting Base: Horizontal, Casting, Tied Front



641 Sayfa/Page: 83 621 Sayfa/Page: 81 532 Sayfa/Page: 68

MODEL NO	A	A2	B	B2	C	E	E2	E3	E4	F	F2	G	H	J	K	L	N	P	R	PİSTON Ø
672 - 5 (Ø 20)	218	262,5	79	110	105	180,5	18,5	70	85	64	62,5	36	110	20	M12	578	11,5x20,5	Ø 20	G1/8	50



Pistonlar çift etkili, manyetik ve yastıklıdır.
Pneumatic cylinders are double acting, magnetic and cushioning