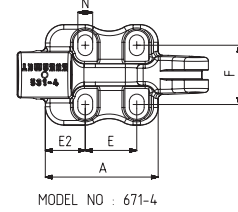
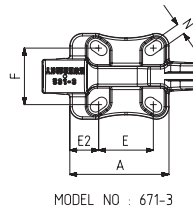
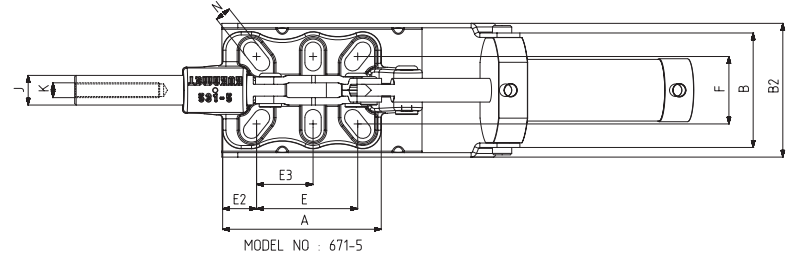
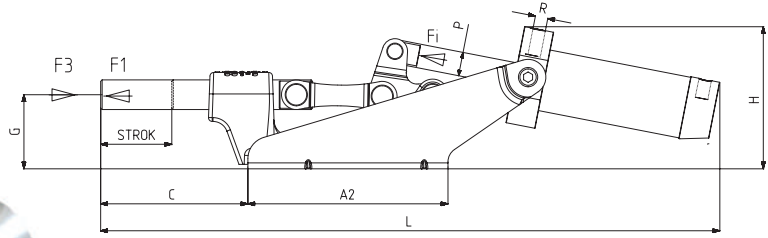


MODEL NO	F1 (N)	F3 (N)	Fi (N)	Vn (dm <sup>3</sup> )	STROK	AĞIRLIK (WEIGHT) (gr ±%)	BAR
671-3 (Ø 12)	1500	3700	300	0.25	23	1090	6
671-3 (Ø 14)	2500	4000	500	0.51	23	1250	6
671-4 (Ø 16)	4500	8100	750	1.04	33	2130	6
671-4 (Ø 18)	4500	8800	750	1.04	33	2140	6
671-5 (Ø 20)	7500	18450	1100	2	42	3640	6

F1 : BASKI KUVVETİ ( EXERTING FORCE ), F3 : TUTMA KAPASİTESİ ( HOLDING CAPACITY ), Fi : UYGULAMA KUVVETİ ( APPLIED FORCE )

Vn, 6 BAR BASINÇTA ÇİFT HAREKET İÇİN HAVA TÜKETİM MİKTARIDIR ( Vn, AIR CONSUMPTION PER DOUBLE STROKE IN dm<sup>3</sup> AT 6 BAR )

671



**Ayak Tipi: Yatay Tabanlı, Döküm Gövdeli, Ön Bağlantılı**  
 Body Mounting Base: Horizontal, Casting, Tied Front



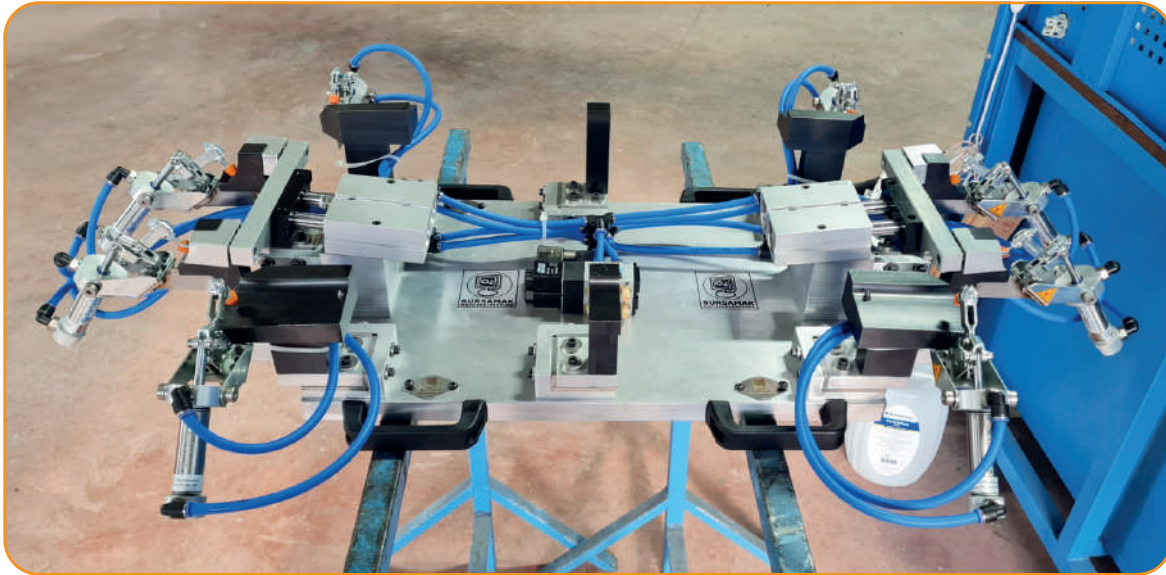
661  
Sayfa/Page: 87



662  
Sayfa/Page: 87



531  
Sayfa/Page: 66



**Pistonlar çift etkili, manyetik ve yastıklıdır.**

Pneumatic cylinders are double acting, magnetic and cushioning.

MODEL NO	A	A2	B	B2	C	E	E2	E3	F	G	H	J	K	L	N	P	R	PİSTON Ø
671-3 (Ø 12)	67	90	51	68	70	37	19,5	-	38	35	72	12	M8	292	7 x 12	Ø 10	G1/8	25
671-3 (Ø 14)	67	100	58	68	70	37	19,5	-	38	35	79	14	M8	312	7 x 12	Ø 12	G1/8	32
671-4 (Ø 16)	76	115	77	78	84	34,5	27	-	40	42	100	16	M10	372	10 x 14	Ø 16	G1/8	40
671-4 (Ø 18)	76	115	77	78	84	34,5	27	-	40	42	100	18	M10	372	10 x 14	Ø 16	G1/8	40
671-5 (Ø 20)	107	170	79	92	101	68	23	38	45,5	51	110	20	M12	456	11 x 22	Ø 20	G1/8	50