

362

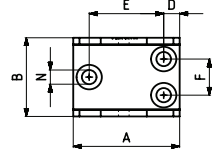
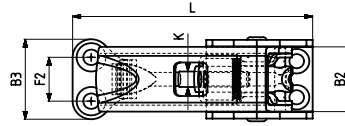
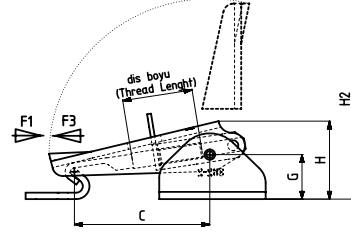


**Ayak Tipi: Yatay Tabanlı**  
Body Mounting Base: Horizontal



MODEL NO	PASLANMAZ (STAINLESS)	F1 (N)	F3 (N)	STROK (DİŞ BOYU) (STROKE) (thread length)	AĞIRLIK (WEIGHT) (gr ±%)
362-1	S362 - ....	1400	1650	25	140
362-2	S362 - ....	1600	1800	25	160

F1 : ÇEKME KUVVETİ ( TENSILE FORCE ) , F3 : TUTMA KAPASİTESİ ( HOLDING CAPACITY )

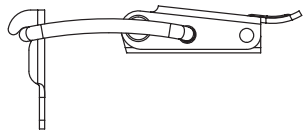


MODEL NO	A	B	B2	B3	C Min	C Max	D	E	F	F2	G	H	H2	K	L Min	L Max	N
362-1	40	29,5	24	31	47	62	6	28	14	17	17	30	78	M6	86	101	Ø 5,5
362-2	40	30,5	25	31	47	62	6	28	14	17	17	30	78	M8	86	101	Ø 5,5

363



**Ayak Tipi: Yatay Tabanlı**  
Body Mounting Base: Horizontal

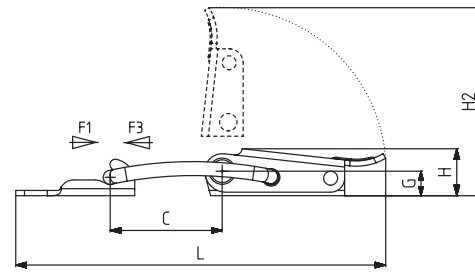


POS 2

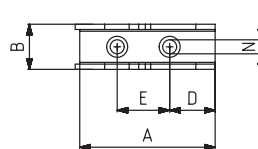
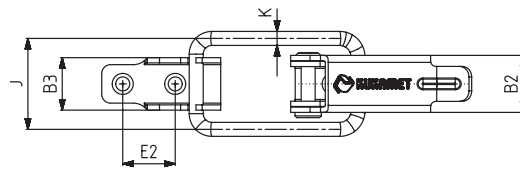


MODEL NO	PASLANMAZ (STAINLESS)	F1 (N)	F3 (N)	AĞIRLIK (WEIGHT) (gr ±%)
363-2	S363-....	1500	1725	50

F1 : ÇEKME KUVVETİ ( TENSILE FORCE ) , F3 : TUTMA KAPASİTESİ ( HOLDING CAPACITY )



POS 1



MODEL NO	A	B	B2	B3	C	D	E	E2	G	H	H2	J	K	L	N
363-2	38.5	13	16.3	15	32	13	15	15	7	13.5	54	25	4	106	Ø 4