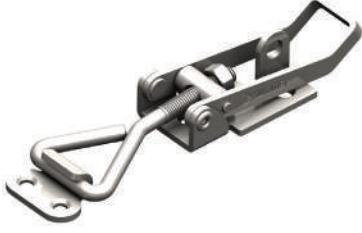


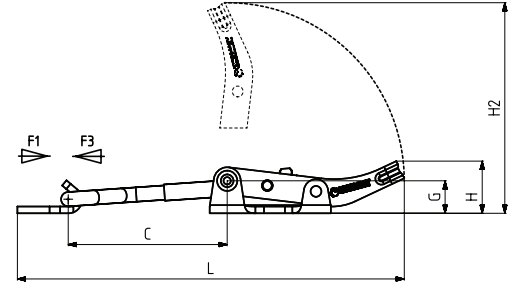
361-1



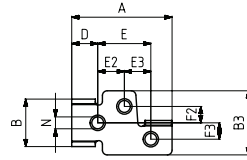
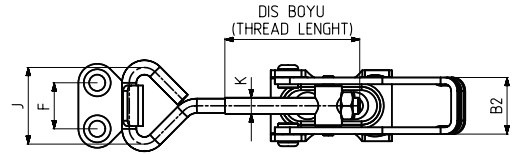
MODEL NO	PASLANMAZ (STAINLESS)	F1 (N)	F3 (N)	STROK (DIŞ BOYU) (STROKE) (thread length)	AĞIRLIK (WEIGHT) (gr ±%2)
361 - 1	S361 -	1000	1200	23	55
361 - 2	S361 -	1500	1725	50	100
361 - 2 - K	S361 -	1500	1725	50	100
361 - 3	S361 -	2000	2500	40	250
361 - 3 - K	S361 -	2000	2500	40	240

F1 : ÇEKME KUVVETİ (TENSILE FORCE), F3 : TUTMA KAPASİTESİ (HOLDING CAPACITY)

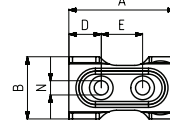
361-2



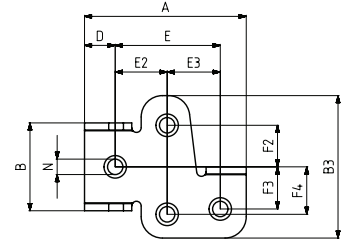
361-2-K



MODEL NO : 361-1



MODEL NO : 361-2 / 361-2-K

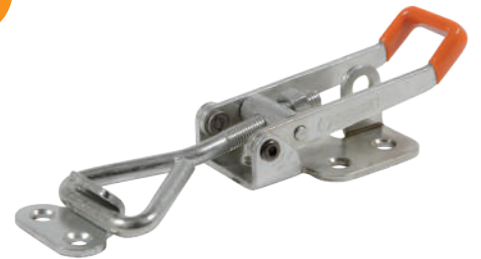


MODEL NO : 361-3 / 361-3-K

361-3



361-3-K



Ayak Tipi: Yatay Tabanlı
Body Mounting Base: Horizontal

MODEL NO	A	B	B2	B3	C min.	C max.	D	E	E2	E3	F	F2	F3	F4	G	H	H2	J	K	L min.	L max.	N
361 - 1	42,5	20	16,5	27	22	31,5	11	22,5	11,3	11,2	14	6,9	6,9	-	10,5	16,5	57,5	20	M5	83	93,5	Ø 5
361 - 2	45	26	21	-	25	60	13,75	17,5	-	-	17	-	-	-	12	19,5	78	28,5	M6	110	145	Ø 6
361 - 2 - K	45	26	21	-	25	60	13,75	17,5	-	-	17	-	-	-	12	19,5	78	28,5	M6	110	145	Ø 6
361 - 3	68,5	37	31,5	60	47	61	13	44,5	22	22,5	-	17,5	17,75	20	15	22	124	40	M8	177	191	Ø 6
361 - 3 - K	68,5	37	31,5	60	47	61	13	44,5	22	22,5	22	17,5	17,75	20	15	22	112	40	M8	164	178	Ø 6