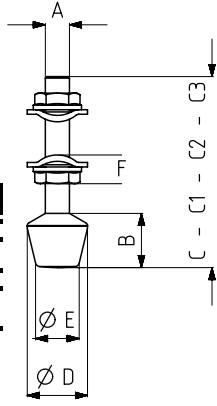


911

**Silikon Uç**  
Silicon Squeeze Part

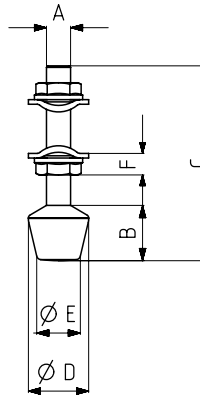


KOD	MODEL NO	PASLANMAZ (STAINLESS)	SİYAH (BLACK)	AĞIRLIK (WEIGHT) (gr)	A CIVATA DIN 933 (SCREW DIN 933)	B	C	D	E	F
150-181	911-0	S 911 - ....	B 911 - ....	7	M 4 x 25	7	31	10	8	6
150-547	911-0-C1	S 911 - ....	B 911 - ....	8	M 4 x 60	7	65,5	10	8	6
150-99	911-1	S 911 - ....	B 911 - ....	12	M 5 x 35	10,5	43,5	12,5	9	7
150-545	911-1-C1	S 911 - ....	B 911 - ....	14	M 5 x 60	10,5	68,5	12,5	9	7
150-86	911-2	S 911 - ....	B 911 - ....	23	M 6 x 40	14,5	50,5	16	10,5	8
150-245	911-2-C1	S 911 - ....	B 911 - ....	34	M 6 x 100	14,5	110,5	16	10,5	8
150-246	911-2-C2	S 911 - ....	B 911 - ....	41	M 6 x 120	14,5	130,5	16	10,5	8
150-546	911-2-C3	S 911 - ....	B 911 - ....	28	M 6 x 60	14,5	70,5	16	10,5	8
150-87	911-3	S 911 - ....	B 911 - ....	46	M 8 x 50	18	63,5	20	14	10
150-247	911-3-C1	S 911 - ....	B 911 - ....	55	M 8 x 70	18	83,5	20	14	10
150-283	911-3-C2	S 911 - ....	B 911 - ....	75	M 8 x 130	18	143	20	14	10
150-641	911-3-C3	S 911 - ....	B 911 - ....	22	M 8 x 35	18	48,5	20	14	10
150-88	911-4	S 911 - ....	B 911 - ....	97	M 10 x 70	23,5	87	26,5	17	13
150-217	911-4-C1	S 911 - ....	B 911 - ....	116	M 10 x 110	23,5	125	26,5	17	13
150-116	911-5	-	B 911 - ....	156	M 12 x 80	27,25	100	30	21	15
150-354	911-5-C1	-	B 911 - ....	174	M 12 x 110	27,25	130	30	21	15

new

911 NR

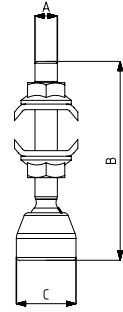
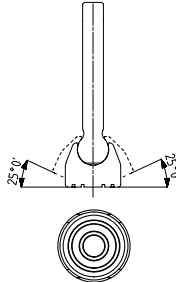
**Doğal Kauçuk Uç**  
Natural Rubber Squeeze Part



KOD	MODEL NO	AĞIRLIK (WEIGHT) (gr)	A CIVATA DIN 933 (SCREW DIN 933)	B	C	D	E	F
150-181	BG911-0-NR	7	M 4 x 25	7	31	10	8	6
150-99	BG911-1-NR	12	M 5 x 35	10,5	43,5	12,5	9	7
150-86	BG911-2-NR	23	M 6 x 40	14,5	50,5	16	10,5	8
150-87	BG911-3-NR	46	M 8 x 50	18	63,5	20	14	10
150-88	BG911-4-NR	97	M 10 x 70	23,5	87	26,5	17	13
150-116	BG911-5-NR	156	M 12 x 80	27,25	100	30	21	15

912

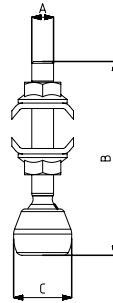
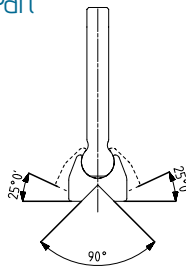
**Metal Mafsal Uç**  
Swivel Metal Squeeze Part  
PATENT NO: 20100115



MODEL NO	AÇI (ANGLE)	AĞIRLIK (WEIGHT) (gr)	A	B	C
912-2	25°	36	M6	53,5	Ø15
912-3	25°	70	M8	63,5	Ø20
912-4	25°	149	M10	90	Ø26
912-5	25°	223	M12	103	Ø30

913

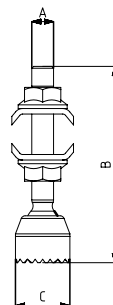
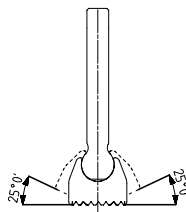
**Metal V Mafsal Uç**  
V Grooved Swivel Metal Squeeze Part  
PATENT NO: 20100115



MODEL NO	AÇI (ANGLE)	AĞIRLIK (WEIGHT) (gr)	A	B	C
913-2	25°	32	M6	53,5	Ø15
913-3	25°	66	M8	63,5	Ø20
913-4	25°	142	M10	90	Ø26
913-5	25°	212	M12	103	Ø30

914

**Metal Tırtır Mafsal Uç**  
Knurled Swivel Metal Squeeze Part  
PATENT NO: 20100115



MODEL NO	AÇI (ANGLE)	AĞIRLIK (WEIGHT) (gr)	A	B	C
914-2	25°	33	M6	53,5	Ø15
914-3	25°	69	M8	63,5	Ø20
914-4	25°	148	M10	90	Ø26
914-5	25°	222	M12	103	Ø30