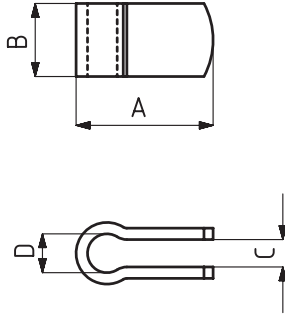




941-G

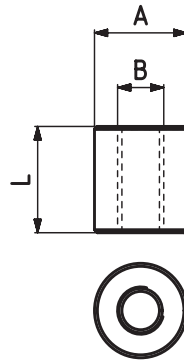
Lama U Bağlantı Grubu
Bolt Retainers



MODEL NO	SİYAH (BLACK)	SİLİKON UÇ (SQUEEZE PART)	AĞIRLIK (WEIGHT) (gr ±%2)	A	B	C	D
941 - 1 - G	B 941 -	M5	6	25	10	5	Ø 6,5
941 - 2 - G	B 941 -	M6	10	25	13	5	Ø 6,5
941 - 2 - C1 - G	B 941 -	M6	16	35	13	6,5	Ø 6,5
941 - 3 - G	B 941 -	M8	20	30	16	6	Ø 8,5
941 - 4 - G	B 941 -	M10	35	37	20	8	Ø 10,5
941 - 5 - G	B 941 -	M12	61	40	25	10	Ø 12,5

951-G

Lama Uç Bağlantı Grubu
Sleeve

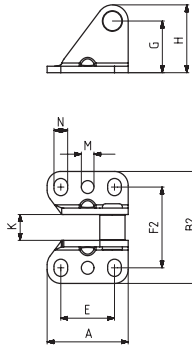
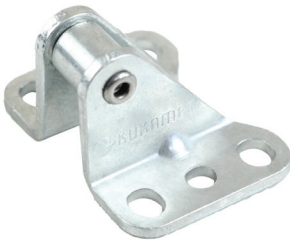


MODEL NO	SİYAH (BLACK)	AĞIRLIK (WEIGHT) (gr ±%2)	A	B	L
951 - 1 - G	B 951 -	6	Ø 10	M5	12
951 - 2 - G	B 951 -	10	Ø 12	M6	15
951 - 3 - G	B 951 -	23	Ø 16	M8	18
951 - 4 - G	B 951 -	32	Ø 18	M10	22
951 - 5 - G	B 951 -	44	Ø 20	M12	27
951 - 6 - G	B 951 -	94	Ø 25	M12	32



961

Gerdirme Parçası
Stretcher Parts

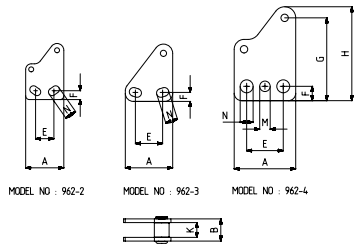


KOD	MODEL NO	PASLANMAZ (STAINLESS)	SİYAH (BLACK)	AĞIRLIK (WEIGHT) (gr ±%2)	A	E	G	H	K	M	N	F2	B2
961 - 2	411 - 2	S 961 -	B 961 -	50	31	15	26	31,5	10	-	6 x 9,5	32,5	47
961 - 3	411 - 3	S 961 -	B 961 -	65	38,5	22	24	31,5	12	-	7 x 10	37,5	52
961 - 4	411 - 4	-	B 961 -	210	50	30	40	49	16	8,5	10,5 x 15	60,5	84



962

Gerdirme Parçası
Stretcher Parts

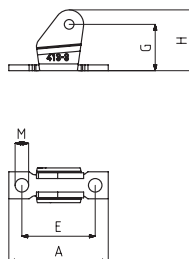


KOD	MODEL NO	PASLANMAZ (STAINLESS)	SİYAH (BLACK)	AĞIRLIK (WEIGHT) (gr ±%2)	A	B	E	F	G	H	K	M	N
962 - 2	412 - 2	S 962 -	B 962 -	51	31	15	15	7	40	45,5	10	-	6 x 9,5
962 - 3	412 - 3	S 962 -	B 962 -	65	38,5	18	22	7,3	39	46,5	12	-	7 x 10
962 - 4	412 - 4	-	B 962 -	220	50	24	30	11,5	67	76	16	8,5	Ø10,5



963

Gerdirme Parçası
Stretcher Parts



KOD	MODEL NO	PASLANMAZ (STAINLESS)	SİYAH (BLACK)	AĞIRLIK (WEIGHT) (gr ±%2)	A	E	M	G	H
963-3	413-3	S 963 -	B 963 -	46	51,5	38	7	24	31,5