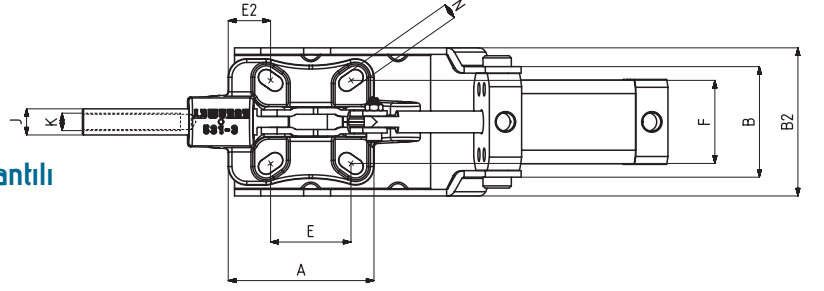
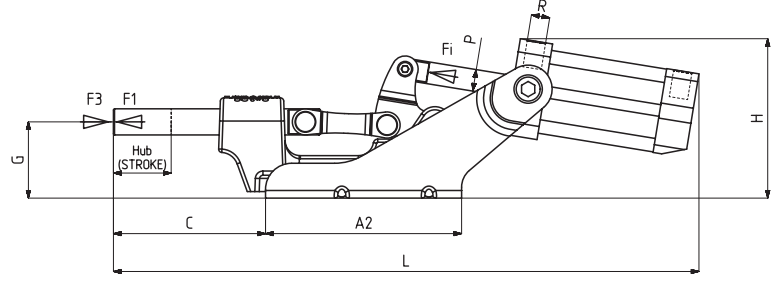




MODEL NO	F1 (N)	F3 (N)	Fi (N)	Vn (dm ³)	STROK	AĞIRLIK (WEIGHT) (gr ±%)	BAR
673 - 3 (Ø 12)	1500	3700	300	0,25	23	1090	6
673 - 3 (Ø 14)	2500	4000	500	0,51	23	1250	6

F1 : BASKI KUVVETİ (EXERTING FORCE) , F3 : TUTMA KAPASİTESİ (HOLDING CAPACITY) , Fi : UYGULAMA KUVVETİ (APPLIED FORCE)

Vn , 6 BAR BASINÇTA ÇİFT HAREKET İÇİN HAVA TÜKETİM MİKTARIDIR (Vn , AIR CONSUMPTION PER DOUBLE STROKE IN dm³ AT 6 BAR)



Ayak Tipi: Yatay Tabanlı, Döküm Gövdeli, Ön Bağlantılı

Body Mounting Base: Horizontal, Casting, Tied Front

Sensör Kanallı - Kare Pistonlu

With Square Piston and Sensor Slot



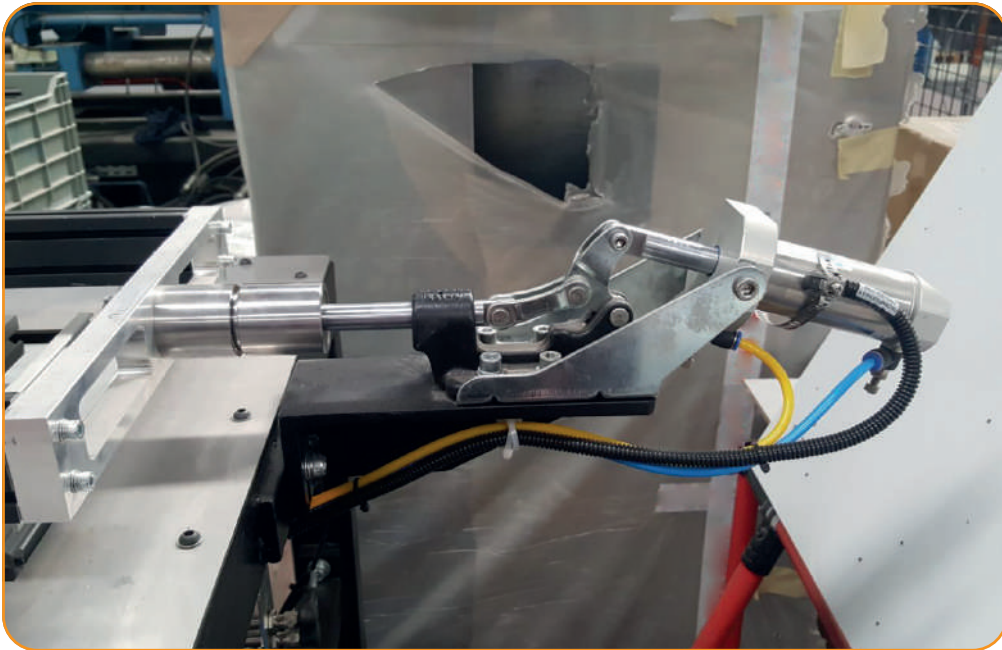
661
Sayfa/Page: 87



533
Sayfa/Page: 69



535-R-L
Sayfa/Page: 72



Pistonlar çift etkili, manyetik ve yastıklıdır

Pneumatic cylinders are double acting, magnetic and cushioning

MODEL NO	A	A2	B	B2	C	E	E2	F	G	H	J	K	L	N	P	R	PİSTON Ø
673 - 3 (Ø 12)	67	90	51	68	70	37	19,5	38	35	73	12	M8	268	7 x 12	Ø 10	G1/8	25
673 - 3 (Ø 14)	67	100	58	68	70	37	19,5	38	35	80	14	M8	288	7 x 12	Ø 12	G1/8	32