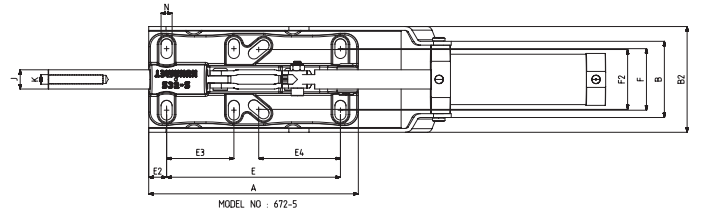
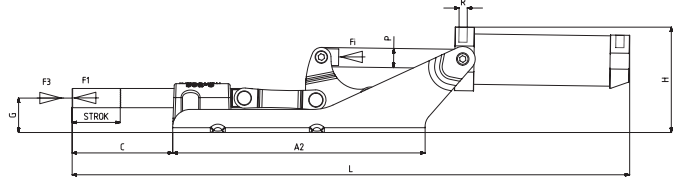


672

new

MODEL NO	F1 (N)	F3 (N)	Fİ (N)	Vn (dm ³)	STROK	AĞIRLIK (WEIGHT) (gr)	BAR
672-5 (Ø 20)	7500	18450	1100	2,8	95	5260	6
F1 : BASKI KUVVETİ (EXERTING FORCE) , F3 : TUTMA KAPASİTESİ (HOLDING CAPACITY) , Fİ : UYGULAMA KUVVETİ (APPLIED FORCE)							
Vn ,6 BAR BASINÇTA ÇİFT HAREKET İÇİN HAVA TÜKETİM MİKTARIDIR (Vn ,AIR CONSUMPTION PER DOUBLE STROKE IN dm ³ AT 6 BAR)							



Ayak Tipi: Yatay Tabanlı, Döküm Gövdeli, Ön Bağlantılı
Body Mounting Base: Horizontal, Casting, Tied Front

MODEL NO	A	A2	B	B2	C	D	E	E2	E3	E4	F	F2	G	H	J	K	L	M	N	P	R	PISTON Ø
672-5 (Ø 20)	218	263	79	110	105		180,5	18,5	70	80 - 90	55-73	54-70,5	36	110	20	M12	578		11,5x20,5	Ø 20	G1/8	50

