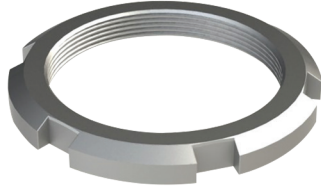
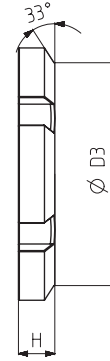
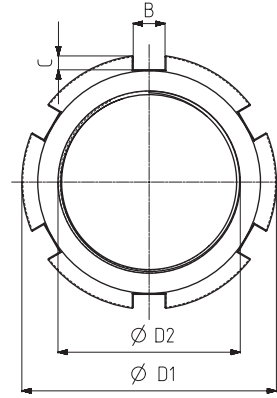


6010-3

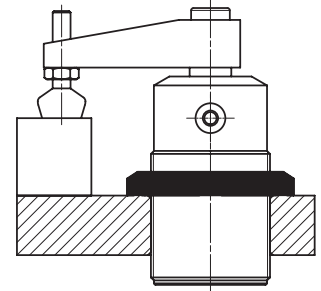


**Bağlantı Somunu (DIN 70852)**  
Connection Nut (DIN 70852)

MODEL NO	B	C	ØD1	ØD2	ØD3	H
6010-3-25	7	3,3	56	M 40 x 1,5	49	8
6010-3-32	8	3,8	68	M 50 x 1,5	60	8
6010-3-40	8	3,8	75	M 55 x 1,5	67	8
6010-3-50	11	4,3	85	M 65 x 1,5	76	9



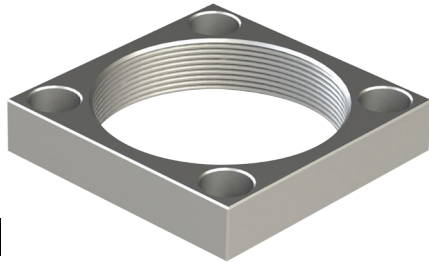
**Montaj seçenekleri**  
Mounting options.



- 1-) Gövdeyi fikstür üzerine sabitlemek için yukarıdan bağlantı somunu ile montaj.
- 2-) Sıkmak için kullanılacak anahtar DIN 1810 A

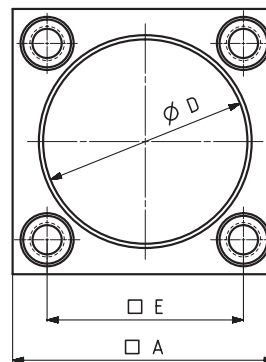
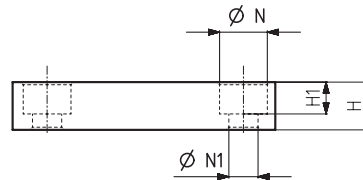
- 1-) Mounting with connection nut from above locking swing clamp on fixture.
- 2-) The key, will be used for squeeze DIN 1810 A

6010-4

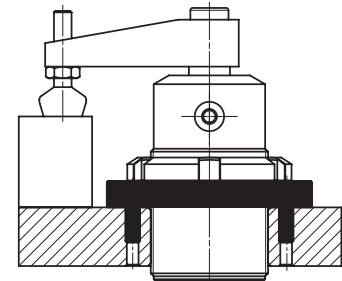


**Bağlantı Flanşı**  
Connection Flange

MODEL NO	A	E	ØD	H	H1	ØN	ØN1
6010-4-25	50	37	M 40 x 1,5	10	6	9	5,5
6010-4-32	60	45	M 50 x 1,5	12	7	11	6,5
6010-4-40	70	50	M 55 x 1,5	12	7	11	6,5
6010-4-50	80	58	M 65 x 1,5	15	9	13	8,5



**Montaj seçenekleri**  
Mounting options.



- 1-) Döner tip pnömatik bağlantı elemanını flanş içine vidalayarak montaj.
- 2-) Gövdeyi fikstür üzerine kilitlemek için bağlantı somunu ile montaj.
- 3-) Flanş üzerindeki bağlantı delikleri kullanılarak montaj.

- 1-) mounting with swing clamp screwed into flange.
- 2-) mounting with connection nut for locking swing clamp on fixture.
- 3-) mounting with connection holes on the flange.